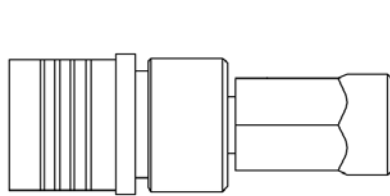




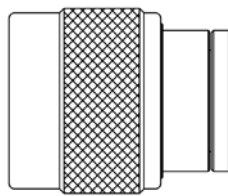
Terminations 1 - 2 Watts



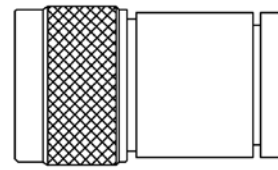
Max Power (Watts)	Series	Connector	Freq (GHz)	L" x OD" (Nom)
1	TQ1-3	QMA-M	Hz - 3.0	1.35 x .30
1	TMDX1-3	4.1/9.5 M / F	Hz - 3.0	1.58 x .92
1	TN1-3	N-M	Hz - 3.0	.99 x .82
1	TN1-6	N-M	Hz - 6.0	.99 x .82
1	TN1-18	N-M	Hz - 18.0	.99 x .82
1	462-1F3	SMA-M	Hz - 3.0	.43 x 3.12
1	462-1	SMA-M	Hz - 18.0	.33 x 3.12
1	462-1C	SMA-M-w/chain	Hz - 18.0	.42 x 3.12
1	462-1RP	RP SMA-M	Hz - 6.0	.33 x 3.12
1	401-11A / -12A	7/16-M / F	Hz - 3.0	2.0 x 1.06
2	401-11 / 12WWP	7/16 DIN-M / F	Hz - 3.0	2.0 x 1.06
1	468-1 / -2	2.92mm M / F	Hz - 40.0	.58 x .36
2	464-1 / -2	SMA-M / F	Hz - 18.0	.58 x .36
2	401-1F3	N-M	Hz - 3.0	1.50 x .82
2	401-1 / -2	N-M / F	Hz - 6.0	1.50 x .82
2	401-3 / -4	BNC-M / F	Hz - 6.0	1.30 x .60
2	401-5	TNC-M	Hz - 6.0	1.35 x .65
2	401-11 / -12	7/16 DIN M / F	Hz - 3.0	2.0 x 1.60
2	TMDM2-4	4.1/9.5 M	Hz - 4.0	.77 x .92
2	401-1C	N-M w/Chain	Hz - 6.0	1.60 x .83
2	401-5C	TNC-M w/Chain	Hz - 6.0	1.50 x .65
2	401-5RP	(Reverse Polarity) TNC-M	Hz - 6.0	1.35 x .65
2	402-1 / 402-2	N-M / N-F	Hz - 12.4	1.50 x .82
2	402-1C / -2C	N-M / F w/Chain	Hz - 12.4	1.60 x .83
2	406X-MF	N-M / F	0.3 - 1.0	2.20 x .82
2	406S-MF	SMA-M / F	0.3 - 1.0	1.31 x 3.44
2	406B-MF	BNC-M / F	0.3 - 1.0	1.82 x .57
2	406T-MF	TNC-M / F	0.3 - 1.0	1.82 x .59



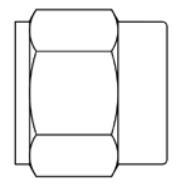
TQ1-3



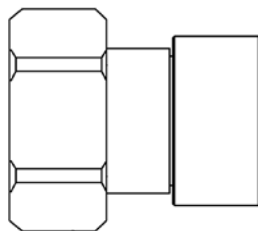
TN1-3



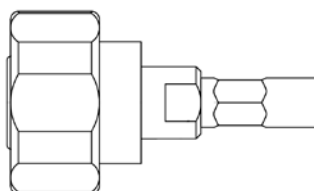
401-1



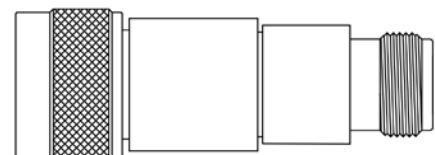
468-1



401-11



TMDM1-3



406N-MF

Vertrieb und Produktinformation:

Melatronik Nachrichtentechnik GmbH

vertrieb@melatronik.de www.melatronik.de